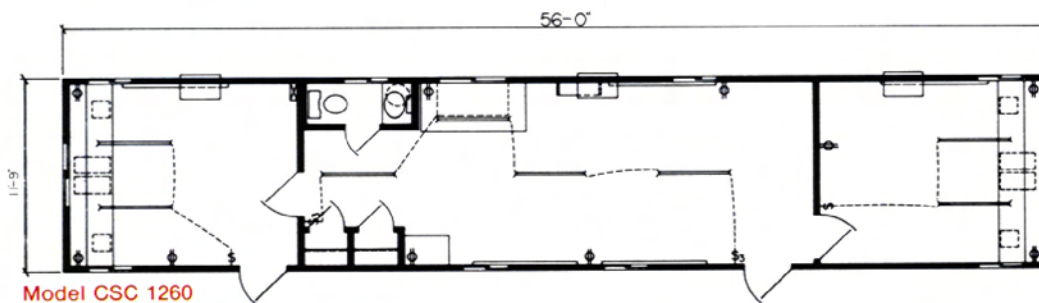
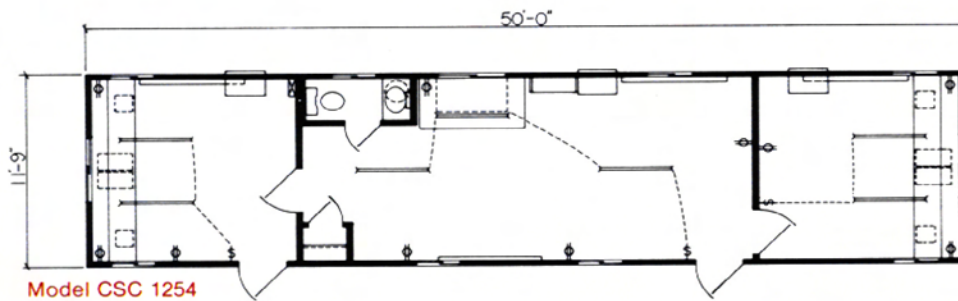
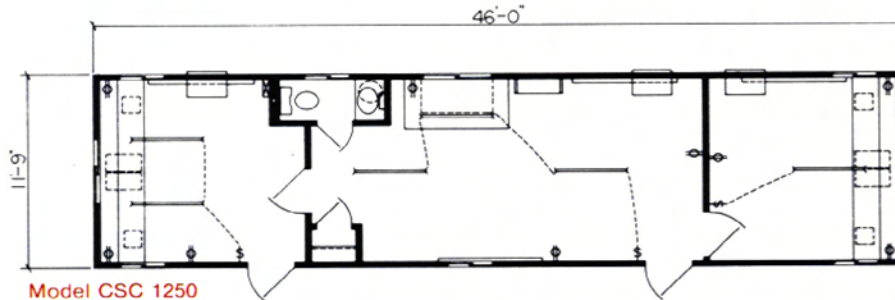
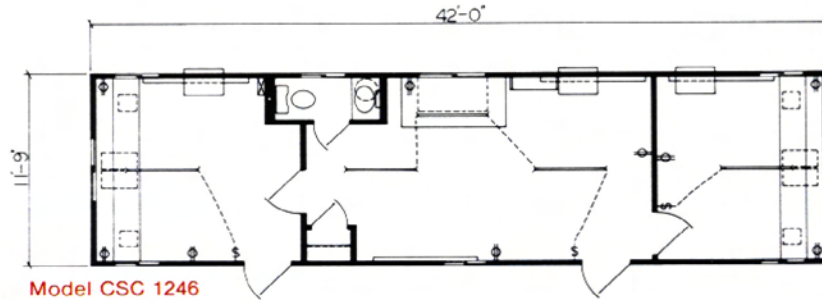


FLEXIBILITY AND AVAILABILITY

12 Foot Wide Series



Modules can be designed to make larger facilities.

14' Wide Series is also available

NOTES

- Windows and doors can be arranged, added or deleted to suit your needs.
- Windows are 46" x 27" and 30" x 27" horizontal sliders.
- Standard doors are heavy duty 32" x 78" with kick plates.
- Desks are 30" deep (not 24") with 2 pencil drawers and full depth file (2 files are standard in 10" and 12" widths).
- Overhead Shelf is standard with each desk and is 12" deep the full length of the desk.
- Plan Tables are 72" x 36", with plan storage and cabinet below.
- Electrical Panel - 60 amp 220 volt is used with 8' x 30' buildings (or smaller). 100 amp 220 volt is used with 8' x 36' (or larger) buildings. 200 amp is available as an option.
- Many options are available. See page 1.